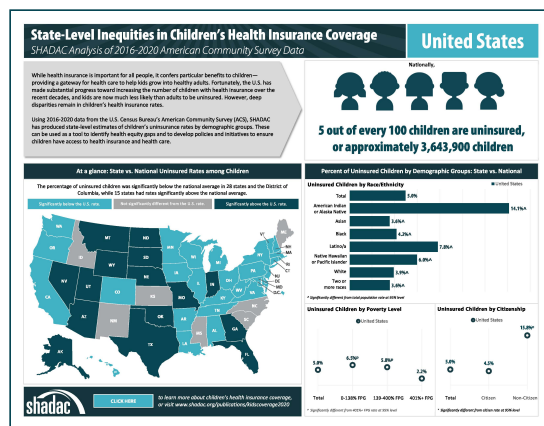




September 2022

SHADAC Announcements



New Brief and 50-State Profiles Analyze Inequities in Children's Health Coverage

In this [issue brief and 50-state profiles](#), SHADAC researchers examined rates of uninsurance among children in the U.S. using 2016-2020 estimates from the American Community Survey (ACS). This analysis looks at rates of uninsurance by race and ethnicity, income, citizenship, age, and metropolitan status. [These products](#) can be used to identify health equity gaps and assist in developing state policies and initiatives to ensure children have needed access to health coverage and care.

SHADAC Blog and Infographic: Falling Uninsured and Private Coverage Rates in the 2021 CPS Health Insurance Coverage Estimates

[New coverage estimates](#) from the Current Population Survey Annual Social and Economic Supplement (CPS ASEC) show good news overall as the percentage of the population without health insurance coverage at any point in 2021 fell to 8.3% from 8.6% in 2020—a decrease of 0.4 percentage points or approximately 1.1 million people. SHADAC explored these estimates across a number of characteristics, including age, race and ethnicity, poverty level, Medicaid expansion status, coverage type, and employment status. [An accompanying infographic](#) also uses findings from the CPS ASEC to compare national-level changes in uninsured rates between 2019 and 2021.

New Interactive Maps and SHADAC Blog: 2021 ACS Estimates featuring State-Level Rates of Uninsurance and Public vs. Private Coverage

Following the release of ACS health insurance coverage estimates by the U.S. Census Bureau, [SHADAC researchers authored a new blog](#) highlighting national and state-level changes in health insurance coverage (uninsurance, public coverage, and private coverage). We also examined the changes in rates for two age groups: nonelderly adults (age 19-64) and children (age 0-18). Overall, the [state-level estimates](#) were mostly consistent with the national trend of decreasing uninsurance rates. Within the states, Maine saw the largest decrease in uninsurance, falling 2.3 percentage points (PP) from 8.0% in 2019 to 5.7% in 2021. Meanwhile, North Dakota was the only state to experience an increase in its uninsurance rate, which rose by 1.0 PP from 6.9% in 2019 to 7.9% in 2021.

Data, Analysis, and Trends from the States

Texas: Recent Enrollment Stats Available through Texas Health and Human Services

Texas updated its [enrollment statistics](#) with information on Medicaid and Children's Health Insurance Program (CHIP) monthly caseload data, including enrollment by risk group and age as well as child enrollment in Medicaid and CHIP. [The data show](#) that in June of 2022, Texas covered 5.4 million people in its Medicaid and CHIP programs, with 4.1 million representing Medicaid clients under age 21 (including Medicare-related, disability-related and pregnant individuals).

Wisconsin: WI Biorepository Providing Population-Based Samples to Researchers

The Survey of the Health of Wisconsin (SHOW) at the University of Wisconsin-Madison [maintains a state-of-the-art biorepository](#) of population-based biosamples that are available for use by other research institutions. SHOW collects these samples via consenting survey participants, and the data are available to researchers for a fee. Researchers must have Institutional Review Board (IRB) approval for access.

State Health Compare Spotlight

SHADAC's *State Health Compare (SHC)* is a free online data tool for obtaining state-level estimates on a range of topics related to health care and social determinants of health for nearly 50 measures. SHC allows users to compare measures across states, look at trends over time as well as download data and data visualizations. This month, we are highlighting the SHC measure...



Average Number of Adult Unhealthy Days

An analysis of the average unhealthy days measure showed **an increase in mentally unhealthy days for adults in all but five states during 2021**. Utah and Kansas experienced the largest increases, with both states accruing an additional 1.6 mentally unhealthy days per month between 2016 and 2021. This measure features the latest data from the Center for Disease Control's Behavioral Risk Factor Surveillance System (BRFSS) and can be compared to previous BRFSS survey data within SHC. While this data highlight focuses on mentally unhealthy days, one can also examine the number of *physically* unhealthy days within this same measure.

EXPLORE THIS MEASURE ON SHC

Additional News and Resources

SHADAC Hosted Webinar with Census Bureau on Health Insurance Coverage Estimates from the 2021 ACS and CPS (Video recording)

On September 29, [SHADAC hosted experts from the U.S. Census Bureau](#) to discuss the 2021 estimates from the ACS and CPS ASEC. The panel walked attendees through how to access and use these new data, as well as demonstrated various Census and SHADAC resources that allow for a deeper dive into the estimates. They also addressed detailed questions submitted by audience members. If you weren't able to attend, the recording is now available to view [on the SHADAC website](#).

Data Tables Available from Phase 3.6 of U.S. Census Bureau Household Pulse Survey (Data resource)

Data tables from the Household Pulse Survey for the period September 14 to September 26, 2022 [are now available for download](#). These tables show data for each of the fifty states, the District of Columbia, and the fifteen largest metropolitan areas and provide insight into the impact of the pandemic on daily life. [Survey topics include](#) symptoms of anxiety and depression in the last two weeks, current health insurance

status, child vaccination status, and household spending data.

Overview of SHADAC's Minnesota Community and Uninsured Profile for MDH's Health Equity Data Community of Practice (*Presentation*)

SHADAC investigator Kathleen T. Call gave a [recent presentation](#) at the Minnesota Department of Health's Health Equity Data Community of Practice Meeting. Dr. Call conducted a guided tour of SHADAC's [Minnesota and Community Uninsured Profile](#)—a valuable tool that provides population characteristics of the uninsured within Minnesota at a ZIP code level. Dr. Call also provided historical context of how this tool came to be developed and examples of practical applications for users. SHADAC has recreated this resource for other states and can continue to do so [by request](#).

Recommendations for our Readers

[The State of Health Insurance in 2022](#)

Sara R. Collins, Lauren A. Haynes, Relebohile Masitha; The Commonwealth Fund

[Analysis of Recent National Trends in Medicaid and CHIP Enrollment](#)

Bradley Corallo, Sophia Moreno; Kaiser Family Foundation

[Mental Health Treatment Among Adults Aged 18-22: United States, 2019-2021](#)

Emily P. Terlizzi, Jeannine S. Schiller; National Center for Health Statistics



Forward

[unsubscribe from this list](#) | [update subscription preferences](#)

Copyright © 2022 University of Minnesota
State Health Access Data Assistance Center (SHADAC)
2221 University Avenue SE, Suite 345, Minneapolis, MN 55414