



2013 HEALTH INSURANCE COVERAGE ESTIMATES

SHADAC Webinar featuring U.S. Census Bureau experts

September 24, 2014, 1:00 PM EDT

You will be connected to broadcast audio through your computer. You can also connect via telephone: **(800) 897-4057**

Slides and handouts at: www.shadac.org/DataReleaseWebinar

Technical Items

- For those dialing in: All phones are muted
- Submit questions using the chat window at any time during the webinar
- Troubleshooting:
 - Call Readytalk's help line: (800) 843-9166
 - Ask for help using the chat feature
- Download the slides at www.shadac.org/DataReleaseWebinar
- Webinar archive will be posted on SHADAC's website
 - E-mail notice will be sent to participants

Presenters



Kathleen Call

SHADAC, Investigator and Professor, University of Minnesota School of Public Health



Jennifer Cheeseman Day

U.S. Census Bureau
Assistant Division Chief of the Social, Economic, and Housing Statistics Division



Joanna Turner

SHADAC
Senior Research Fellow



Brett O'Hara

U.S. Census Bureau
Chief of the Health and Disability Statistics Branch

CPS and ACS

- Current Population Survey (CPS)
 - 2013 estimates released September 16, 2014
- American Community Survey (ACS)
 - 2013 estimates released September 18, 2014

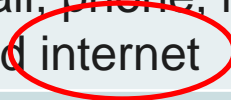
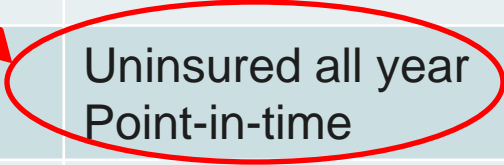
Design Differences

	CPS	ACS
Method	Survey of civilian non-institutionalized population	Survey of U.S. population (including group quarters)
Annual housing units interviewed	About 76,000	About 2.3 million
Geography	Nation, states	Nation, states, sub-state
Mode	Phone and in-person	Mail, phone, in-person, and internet
Uninsurance: Measure	Uninsured all year Point-in-time	Point-in-time
Uninsurance: Years available	1987 to 2013	2008 to 2013

Design Differences

	CPS	ACS
Method	Survey of civilian non-institutionalized population	Survey of U.S. population (including group quarters)
Annual housing units interviewed	About 76,000	About 2.3 million
Geography	Nation, states	Nation, states, sub-state
Mode	Phone and in-person	Mail, phone, in-person, and internet
Uninsurance: Measure	Uninsured all year Point-in-time	Point-in-time
Uninsurance: Years available	1987 to 2013	2008 to 2013

Re-designed



New



Guidance on When to Use Each Source

	CPS	ACS
Trends	✓ 1987 to 2012 2013 forward	✓ 2008 forward
Exchange participation	✓ 2013 baseline	
State estimates	✓	✓
Sub-state estimates		✓ 1-yr for pop > 65,000 3-yr for pop > 20,000 5-yr for pop < 20,000
Small subpopulations		✓

Re-designed CPS

OVERVIEW

Research

- Experts identified weaknesses in the CPS
 - Recall error (uninsured estimate too high), Medicaid estimate too low, respondent fatigue, etc.
- Several years of pilot-testing
 - Qualitative interviews
 - Randomized survey experiments
 - Content test with new questions embedded in full CPS on a test sample using regular interviewing procedures

Re-designed 2014 CPS

- Improved measure of all year coverage (2013)
- Added point-in-time measure (February – April 2014)
- New questions to measure exchange participation and receipt of subsidies
- New questions on employer offered health insurance coverage
- New and modified income questions

Previous Measurement Issues

1. Calendar year reference period

- *“At anytime in 2013 was anyone covered by ...”*

2. Questionnaire structure = “laundry list”

- Job or Union
- Direct Purchase
- Medicare
- Medicaid
- Military

3. Household-level design

Source: Joanne Pascale (AAPOR, 2012)

Flow of Re-designed Questionnaire

Current coverage status



Plan type (includes exchange questions)

Months of coverage

Additional household members covered by plan

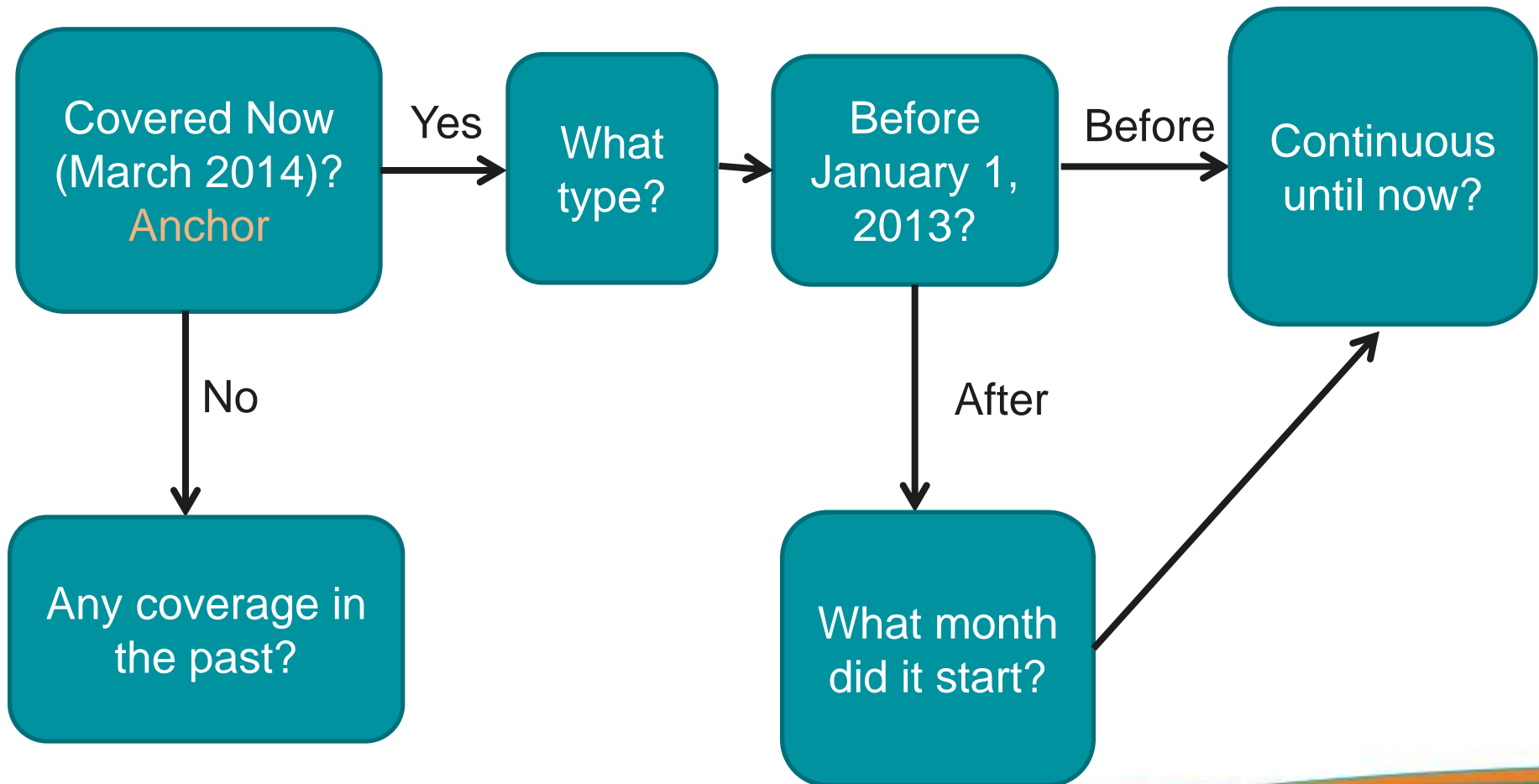
Employer-sponsored insurance offers/take-up (if applicable)

Health status

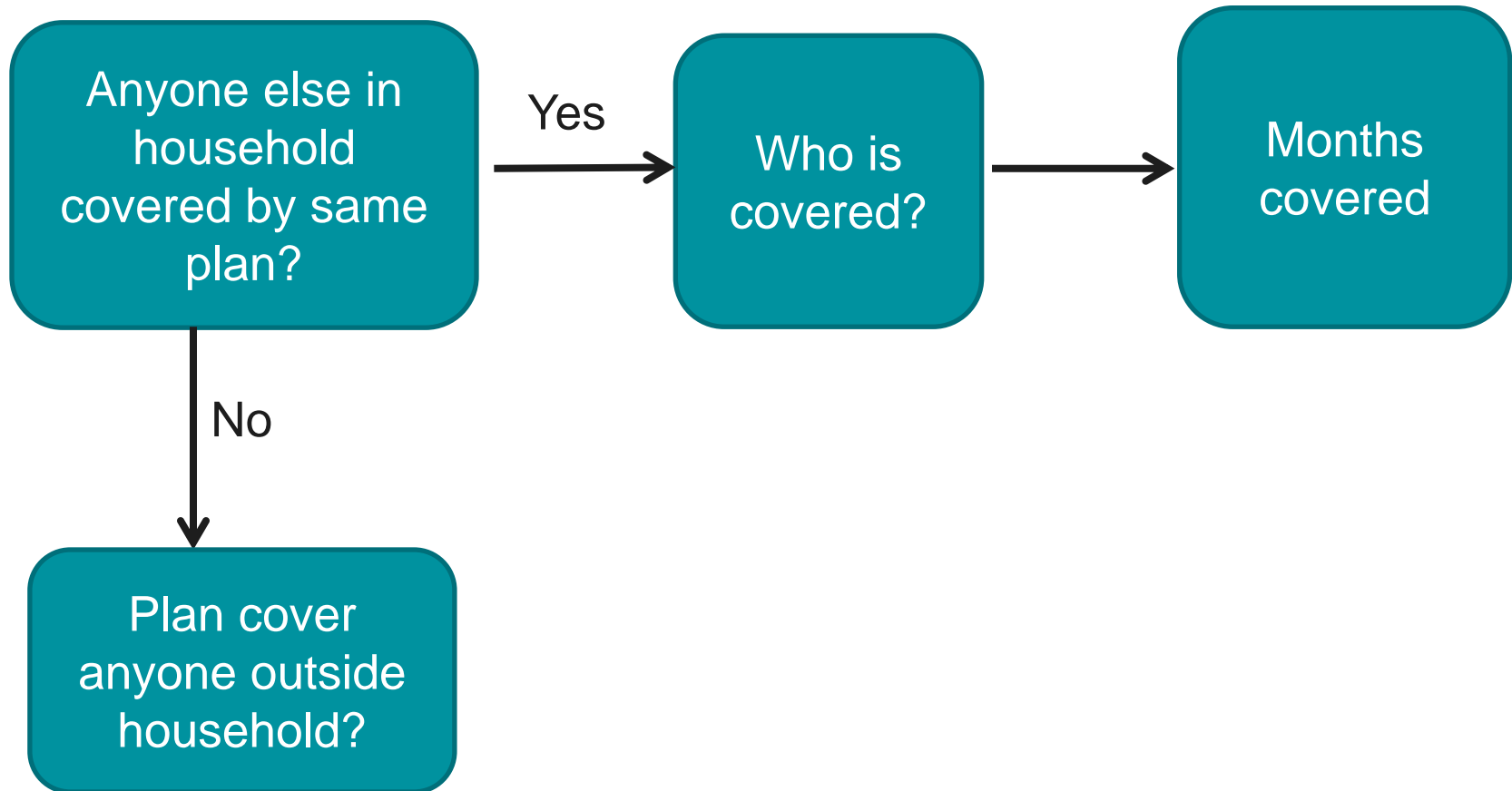
Medical out-of-pocket expenses (MOOP)

Source: U.S. Census Bureau, August 2014, Federal Statistics on Health Insurance Coverage: Technical Meeting on Methods Used in Household Surveys

Flow of Re-designed Questionnaire (2)



Flow of Re-designed Questionnaire (3)



Re-designed CPS

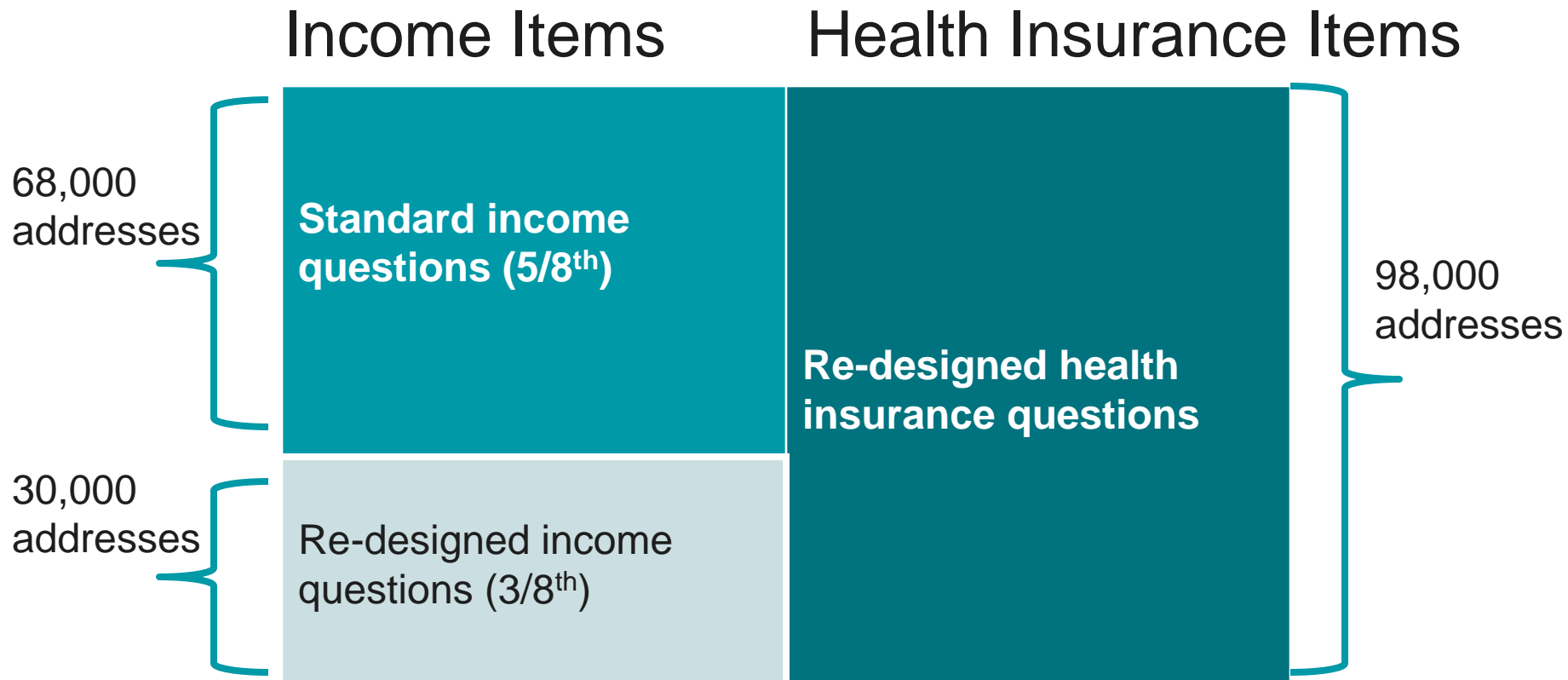
IMPLEMENTATION

Implementation Process

- Split Sample for Income:
 - New questions used for part of the of the 2014 sample
 - Split-panel design preserves time series and provides a bridge between old and new series
- Full sample for Health Insurance:
 - Needed to establish a 2013 baseline before major provisions of ACA take effect
 - Only full sample provides reliable estimates of small groups

Source: U.S. Census Bureau, August 2014, Federal Statistics on Health Insurance Coverage: Technical Meeting on Methods Used in Household Surveys

Implementation and Sample



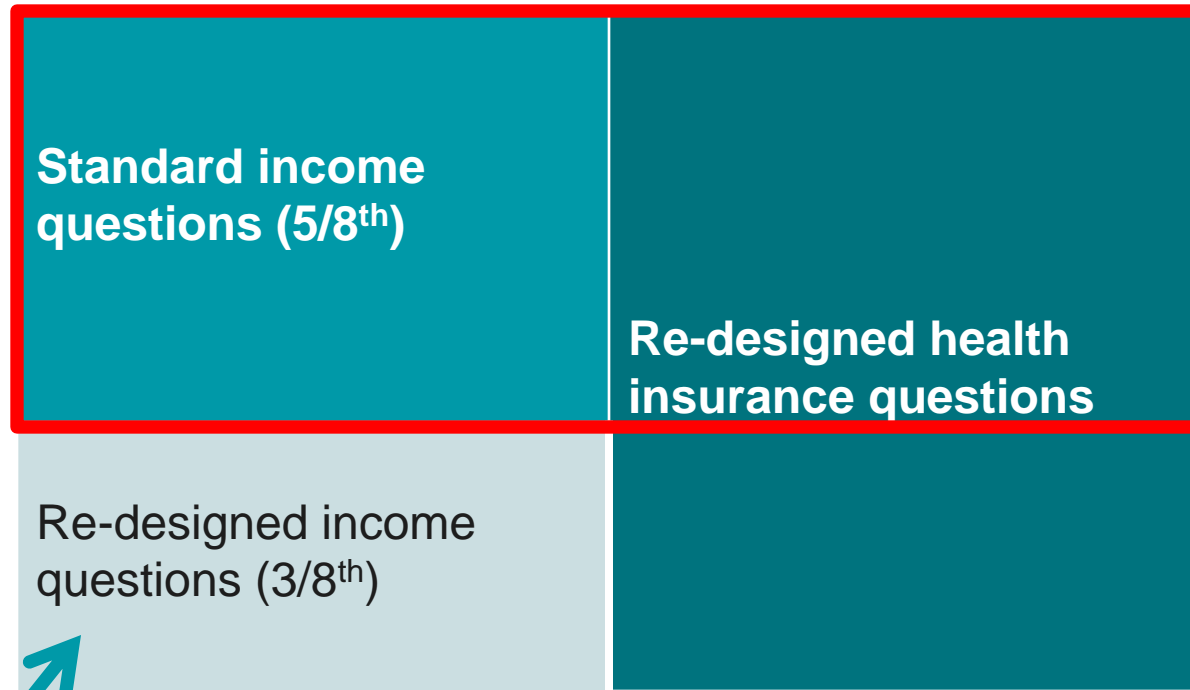
Source: U.S. Census Bureau, August 2014, Federal Statistics on Health Insurance Coverage: Technical Meeting on Methods Used in Household Surveys

Data Release: September 2014

Income Items

Health Insurance Items

68,000
addresses



Census Bureau
currently analyzing

Data Release: January 2015

Income Items

Health Insurance Items



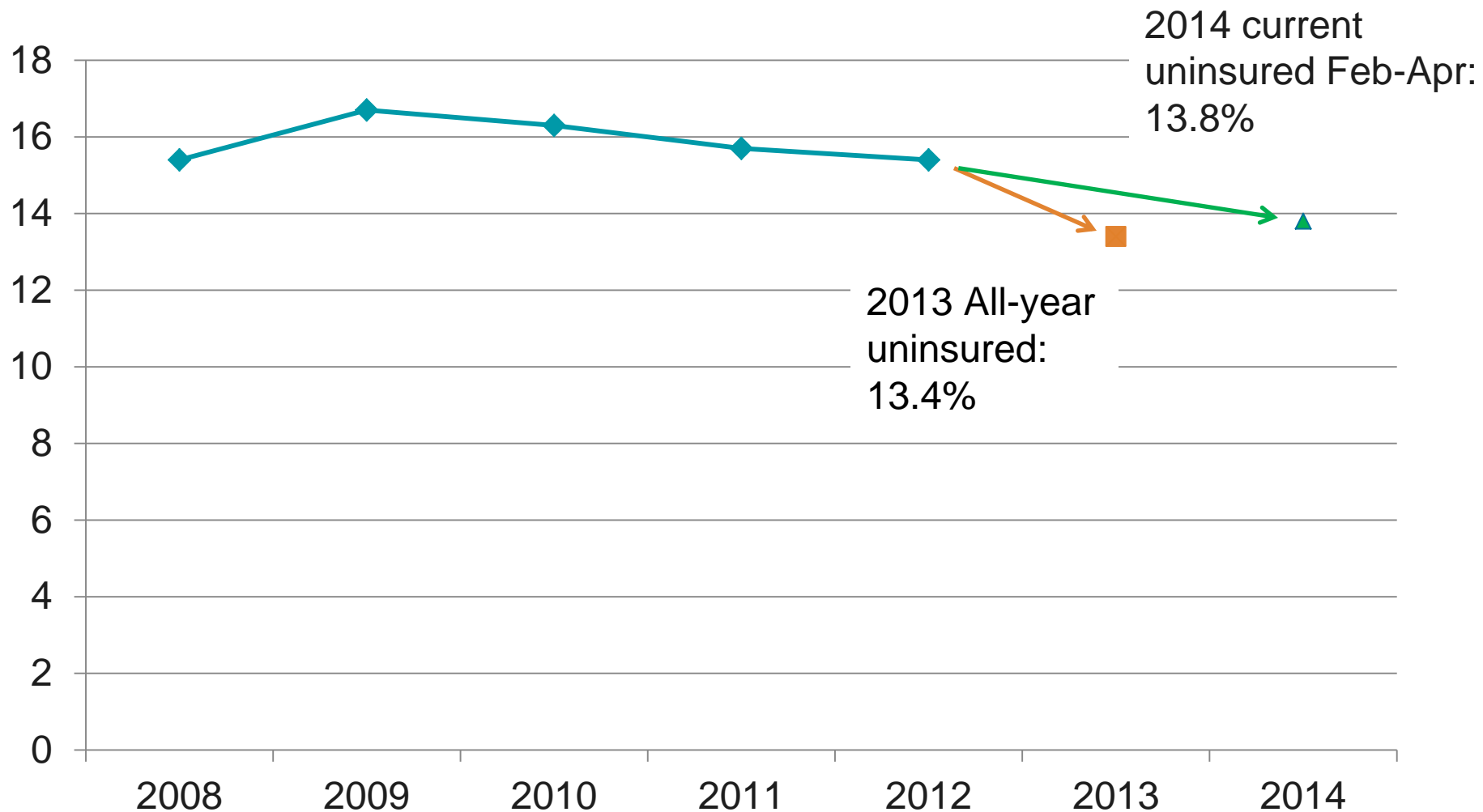
Data Release: Summer 2015

- New health insurance coverage content and questions

CPS

**2013 ESTIMATES AND
FIRST LOOK FEB-APR 2014**

CPS Uninsured Rates



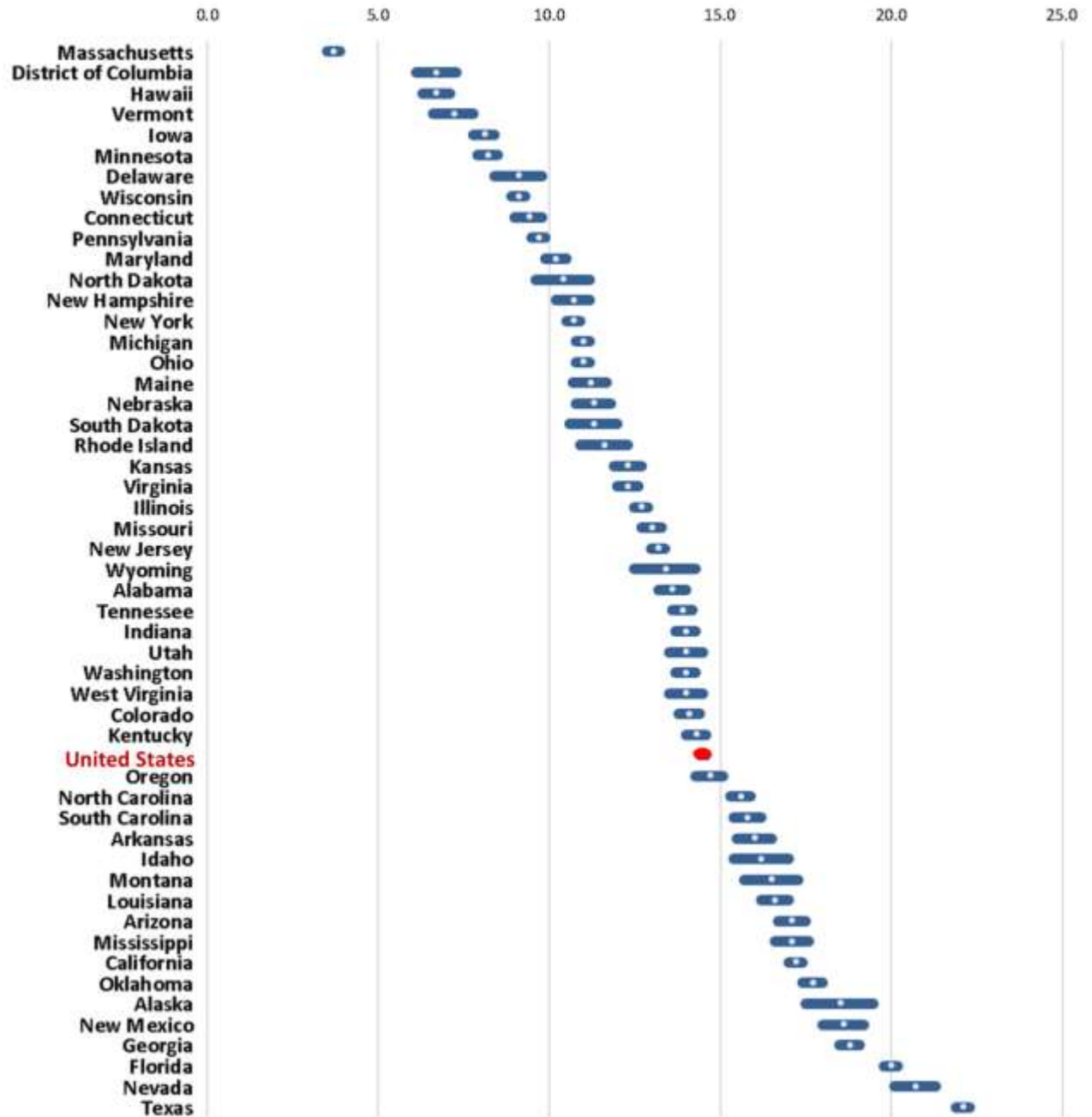
ACS



2013 ESTIMATES AND TRENDS

Population Without Health Insurance Coverage by State: 2013

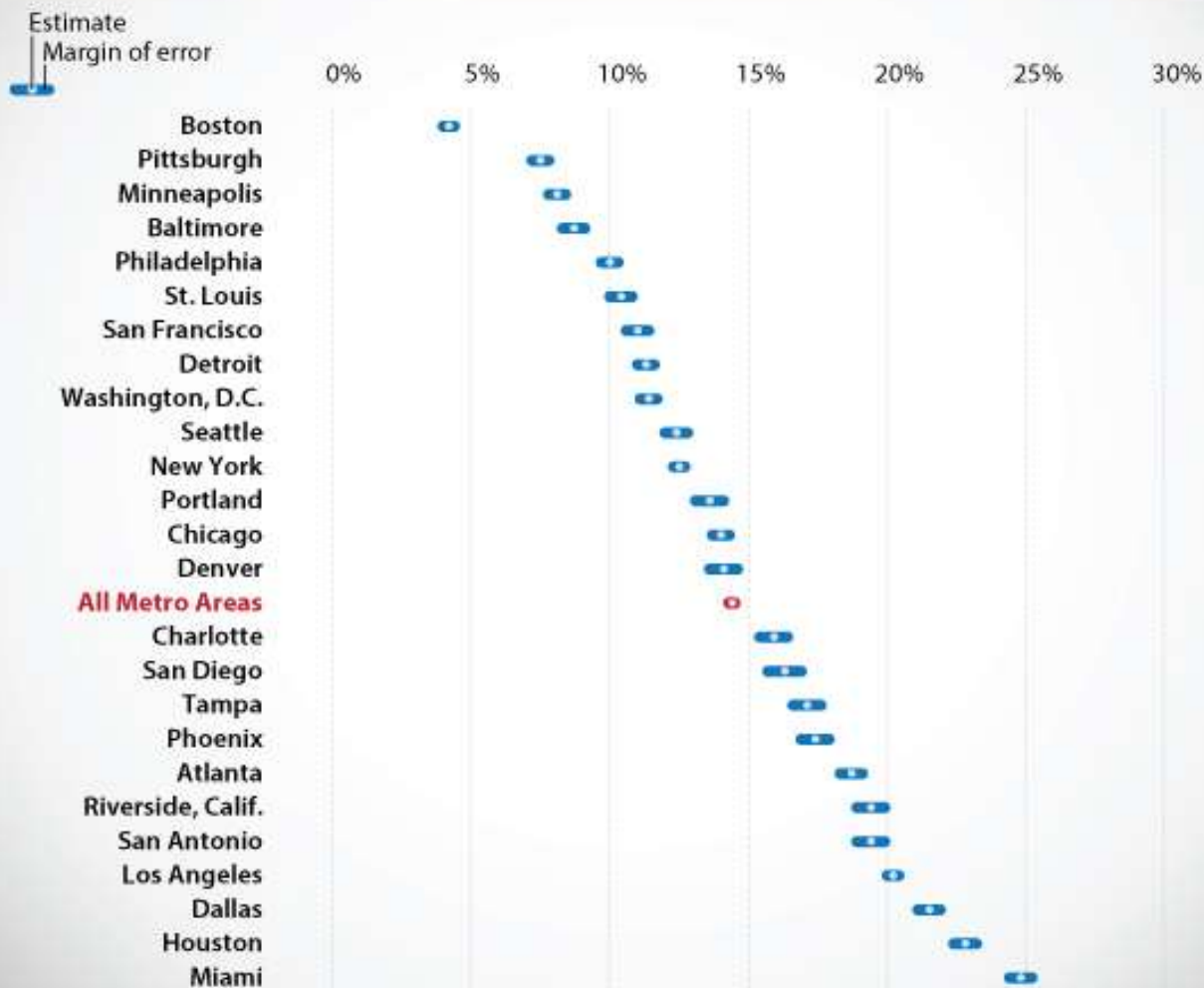
% without Health Insurance



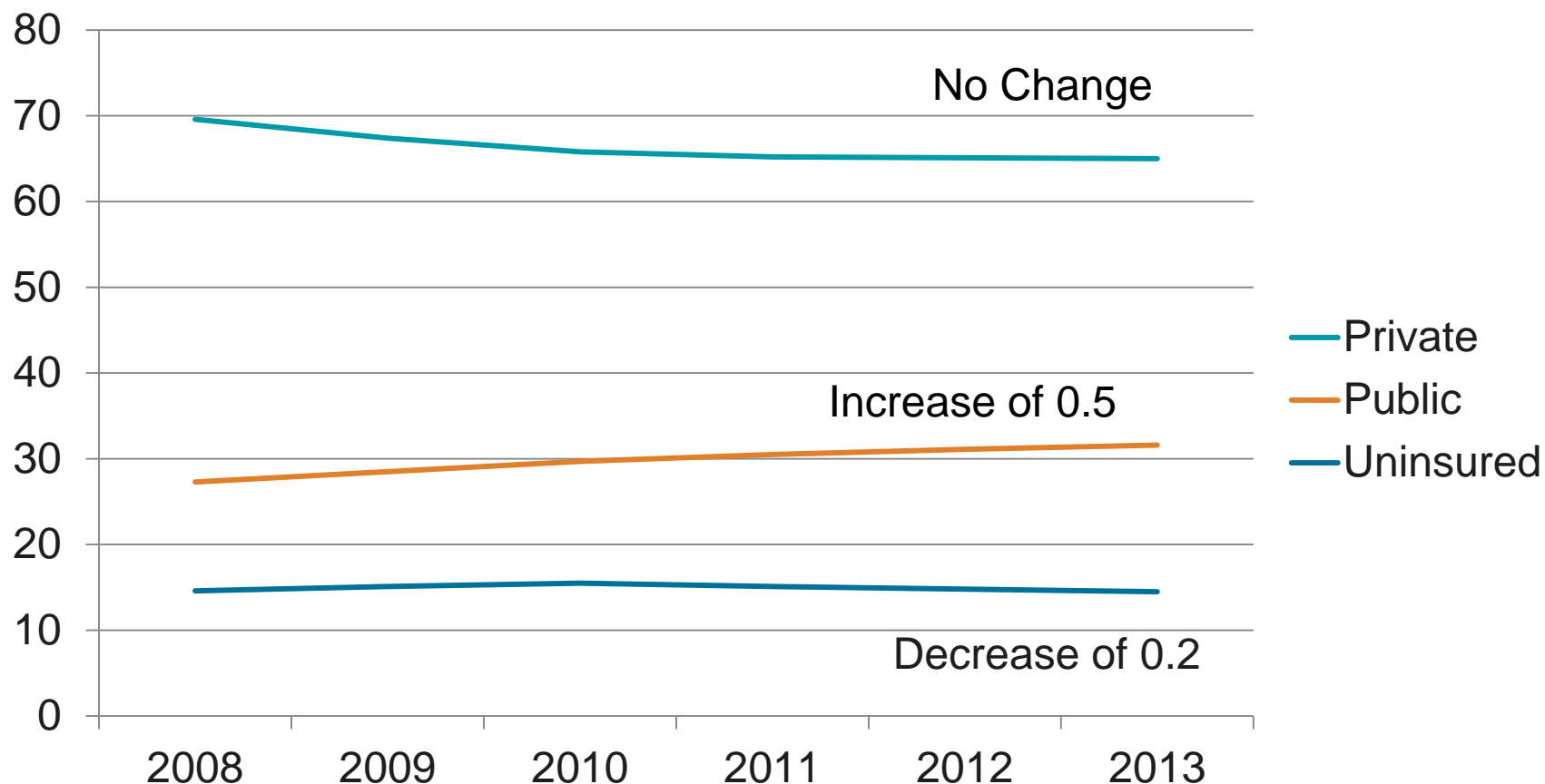
Source: U.S. Census Bureau, American Community Survey, 2013

People Without Health Insurance

25 most populous metro areas sorted by percent uninsured

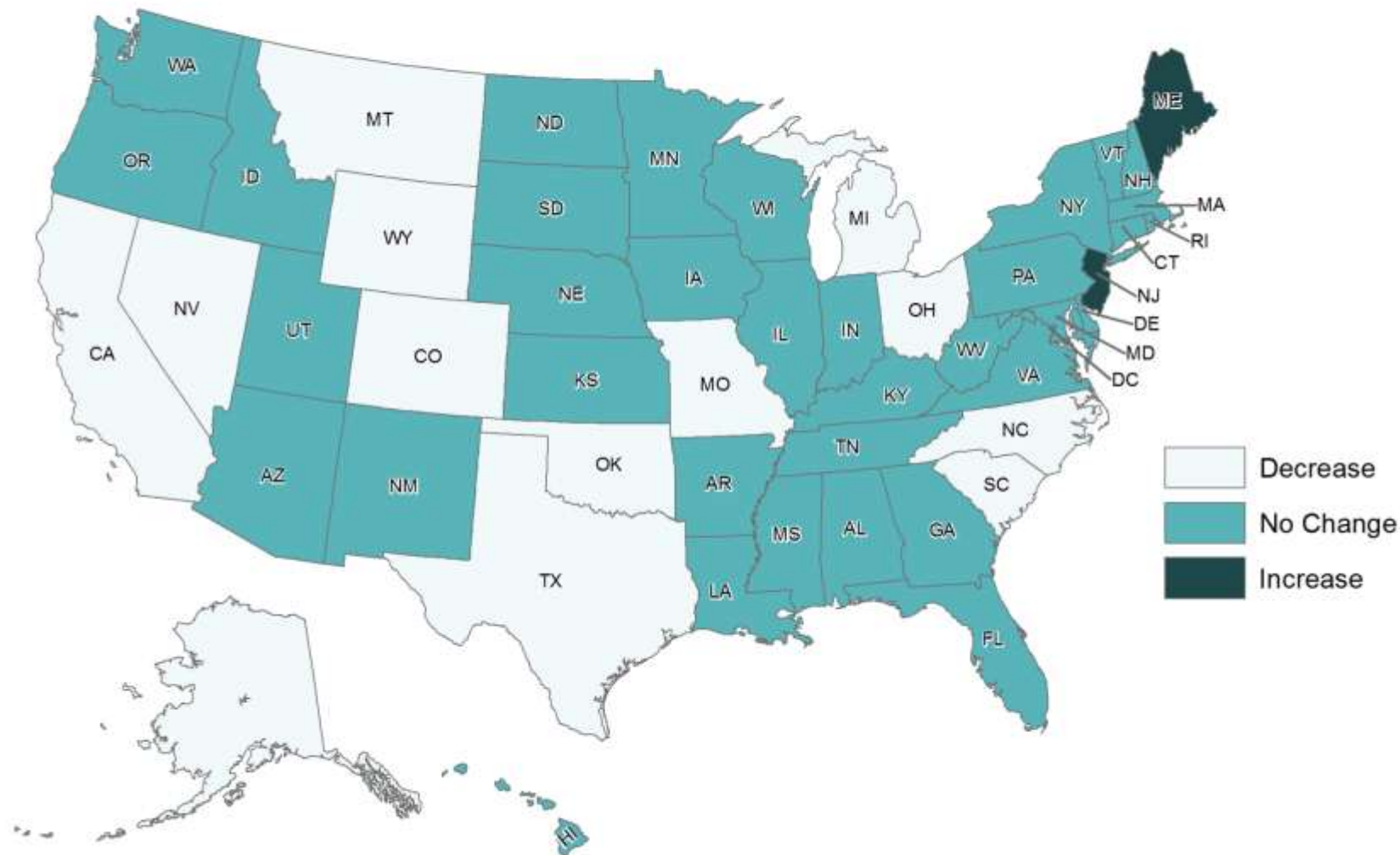


Comparisons over time: Coverage Type (All Ages)



Change from 2012 to 2013 is statistically significant at the 90 percent confidence interval.

Change in Uninsurance Rates from 2012 to 2013 for All People

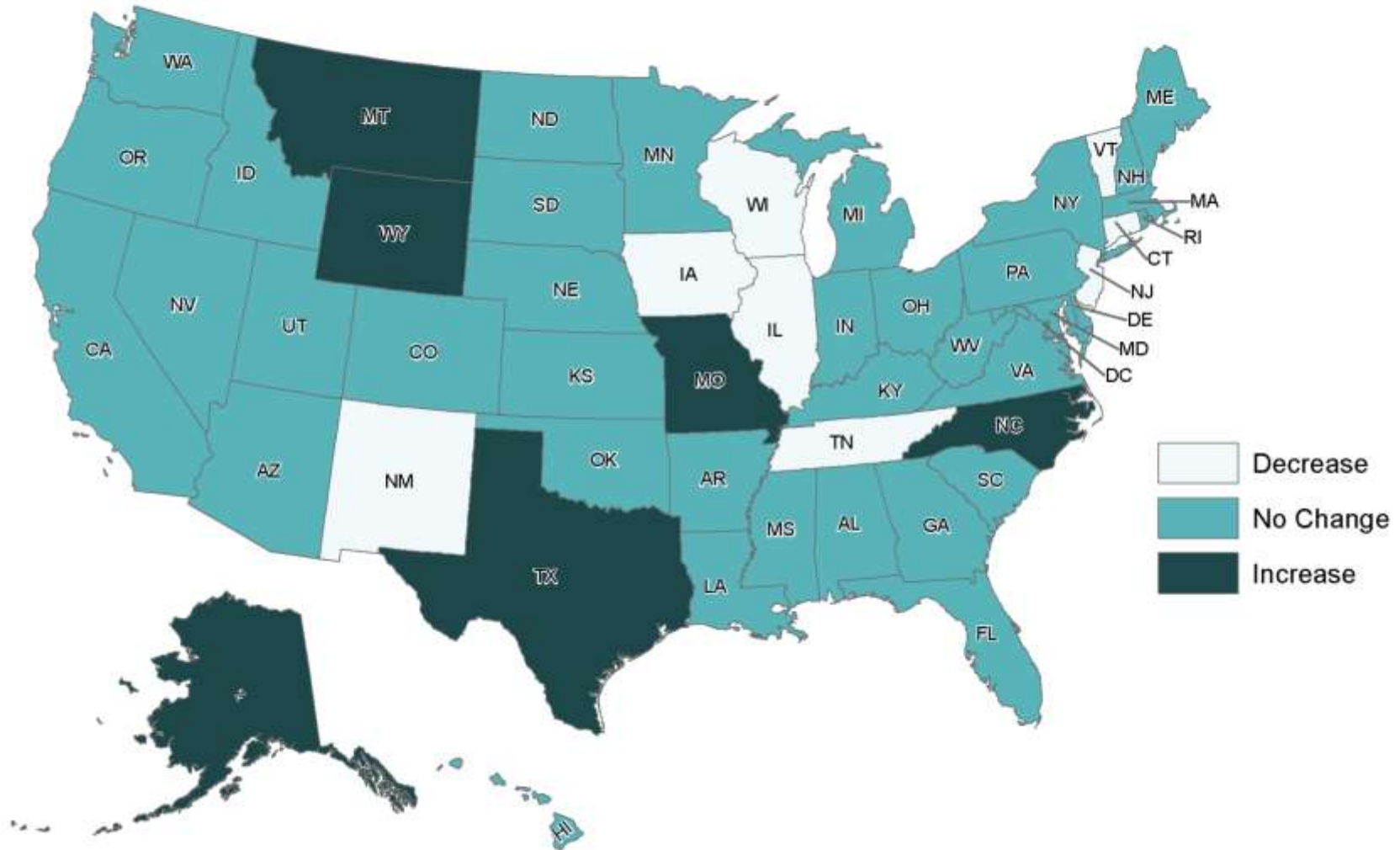


Source: U.S. Census Bureau, 2012 and 2013 1-year American Community Surveys, for the civilian non-institutionalized population.

Change is a significant difference at the 90% Confidence Level.

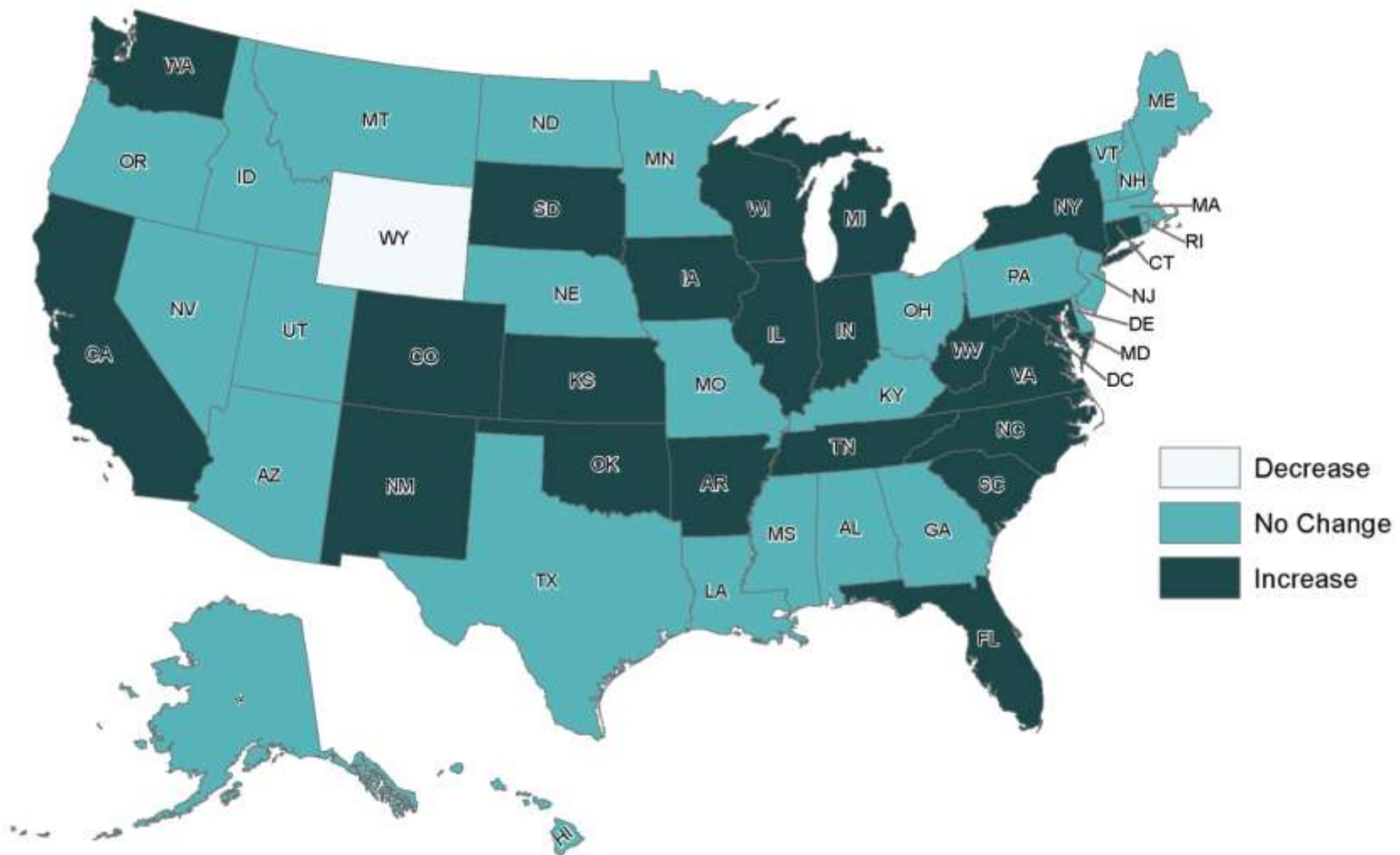


Change in Private Coverage Rates from 2012 to 2013 for All People



Source: U.S. Census Bureau, 2012 and 2013 1-year American Community Surveys, for the civilian non-institutionalized population. Change is a significant difference at the 90% Confidence Level.

Change in Public Coverage Rates from 2012 to 2013 for All People



Source: U.S. Census Bureau, 2012 and 2013 1-year American Community Surveys, for the civilian non-institutionalized population. Change is a significant difference at the 90% Confidence Level.

ACS Public Use Data Release: 2013 Estimates

- Public Use Microdata Samples (PUMS) available October 23
 - 1% public use microdata sample (1% of population)
 - The smallest identifiable geographic unit is the PUMA, containing at least 100,000 persons
 - PUMAs are generally groups of counties or parts of counties, but there are exceptions
 - PUMAs do not cross state boundaries

Upcoming ACS Data Releases: 3 & 5 Year

- 2011-2013 3-year estimates for areas with population >20,000
 - American FactFinder release: October 23
 - PUMS: December 4
- 2009-2013 5-year estimates for all geographic areas
 - American FactFinder release: December 4
 - PUMS: January 22

Census Bureau

RESOURCES

Census Bureau Resources



- Updated health insurance page
 - <http://www.census.gov/hhes/www/hlthins/index.html>

Census Bureau Resources (2)

- American FactFinder summary tables
 - <http://factfinder2.census.gov>
- Table S2701 modified to include rows by health insurance coverage type

Subject	United States									
	Total		Number Uninsured		Percent Uninsured		Number Insured by Coverage Type		Percent Insured by Coverage Type	
	Estimate	Margin of Error	Estimate	Margin of Error	Estimate	Margin of Error	Estimate	Margin of Error	Estimate	Margin of Error
HEALTH COVERAGE BY TYPE										
Private health insurance	(X)	(X)	(X)	(X)	(X)	(X)	202,390,912	+/-362,889	65.0%	+/-0.1
Private health insurance alone	(X)	(X)	(X)	(X)	(X)	(X)	162,306,726	+/-267,279	52.2%	+/-0.1
Employment-based health insurance	(X)	(X)	(X)	(X)	(X)	(X)	168,058,945	+/-298,373	54.0%	+/-0.1
Employment-based health insurance alone	(X)	(X)	(X)	(X)	(X)	(X)	142,134,373	+/-235,585	45.7%	+/-0.1
Direct-purchase health insurance	(X)	(X)	(X)	(X)	(X)	(X)	37,022,187	+/-158,993	11.9%	+/-0.1
Direct-purchase health insurance alone	(X)	(X)	(X)	(X)	(X)	(X)	16,852,374	+/-97,021	5.4%	+/-0.1
TRICARE/military health coverage	(X)	(X)	(X)	(X)	(X)	(X)	8,227,854	+/-64,014	2.6%	+/-0.1
TRICARE/military health coverage alone	(X)	(X)	(X)	(X)	(X)	(X)	3,319,979	+/-45,006	1.1%	+/-0.1
Public coverage	(X)	(X)	(X)	(X)	(X)	(X)	98,172,506	+/-158,033	31.6%	+/-0.1
Public coverage alone	(X)	(X)	(X)	(X)	(X)	(X)	55,737,302	+/-210,203	17.9%	+/-0.1
Medicare coverage	(X)	(X)	(X)	(X)	(X)	(X)	49,419,220	+/-61,344	15.9%	+/-0.1
Medicare coverage alone	(X)	(X)	(X)	(X)	(X)	(X)	13,631,233	+/-57,642	4.4%	+/-0.1
Medicaid/means-tested public coverage	(X)	(X)	(X)	(X)	(X)	(X)	55,668,676	+/-169,584	17.9%	+/-0.1
Medicaid/means-tested public coverage alone	(X)	(X)	(X)	(X)	(X)	(X)	41,076,722	+/-180,237	13.2%	+/-0.1
VA Health Care	(X)	(X)	(X)	(X)	(X)	(X)	6,734,885	+/-43,148	2.2%	+/-0.1
VA Health Care alone	(X)	(X)	(X)	(X)	(X)	(X)	1,029,347	+/-19,418	0.3%	+/-0.1
Uninsured	(X)	(X)	(X)	(X)	(X)	(X)	45,180,675	+/-199,954	14.5%	+/-0.1

CPS Point-in-time estimates Feb-Apr 2014

- Comparison with National Health Interview Survey (NHIS)
 - http://www.cdc.gov/nchs/data/nhis/health_insurance/NCHS_CPS_Comparison092014.pdf

Percentage (and standard error) of persons who lacked health insurance coverage at the time of interview, by age group, race/ethnicity (among persons aged 18–64), and survey data source: United States, January–April 2014

Selected characteristic	National Health Interview Survey, January–March 2014 ¹	Current Population Survey, February–April 2014 ²	Difference (percentage points)
Age (years)			
All ages	13.1 (0.41)	13.8 (0.14)	–0.7
Under 65	15.2 (0.47)	15.8 (0.16)	–0.6
Under 18	6.6 (0.55)	8.5 (0.21)	–1.9*
18–64	18.4 (0.55)	18.5 (0.19)	–0.1
18–24	18.9 (1.10)	21.3 (0.55)	–2.4
19–25	20.9 (1.12)	23.0 (0.53)	–2.1
25–34	24.9 (0.99)	23.8 (0.42)	1.1
35–44	20.3 (0.97)	19.1 (0.39)	1.2
45–64	14.0 (0.63)	14.5 (0.24)	–0.5
65 and over	0.9 (0.19)	1.7 (0.15)	–0.8*

CPS Point-in-time estimates Feb-Apr 2014

- Research File

- <http://www.census.gov/hhes/www/hlthins/data/incpovhlth/2013/current-coverage.html>

ITEM NAME	POSITION	TYPE	LENGTH
H_SEQ Household Seq Number	1	Char	5
PPPOSOLD Person seq within HH	6	Char	2
NOW_ANYCOV Recode: Did person have any type of health insurance coverage at the time of the interview?	8	Char	1

1 = covered/insured
2 = not covered/uninsured

SHADAC

RESOURCES

SHADAC Data Center Releases

Updating with:

- 2013 CPS
- 2013 ACS

Additional Topics

More Data Sources

Expanded Visualizations

The screenshot shows the SHADAC Data Center website. The header includes the SHADAC logo, 'DATA CENTER', and navigation links for 'HOME + NEWS', 'PROFILES', and 'MAPS + CHARTS'. Below the header, there are links for 'Share' and 'Email', and a dropdown menu with 'ABOUT', 'CONTACT', and 'SHADAC.ORG'. The main content area features a map of the United States with a text overlay: 'Create customized reports on state-level health insurance coverage, access, and cost with Data Center, from State Health Access Data Assistance Center (SHADAC)'. Below the map, there is a 'CREATE A REPORT' section with three buttons: 'By Location' (orange), 'By Topic' (teal), and 'By Data Source' (teal). To the right, there is a 'STAY UPDATED' section with an envelope icon and the text: 'Receive the latest in health insurance coverage, access, and cost. Join SHADAC's mailing list.'

<http://datacenter.shadac.org/>

SHADAC Resources

- www.shadac.org/DataReleaseWebinar

SEPTEMBER 2014

Comparing Federal Government Surveys that Count the Uninsured: 2014



BRIEF 41 • MAY 2014

Using Recent Revisions to Federal Surveys for Measuring the Effects of the Affordable Care Act

Authors

Celia Pizarro
Jodie Sasser
Jessica Turner
State Health Access Data Assistance Center (SHADAC)

Summary

This brief discusses recent revisions to several federal surveys that could be used to measure the impact of key provisions of the Affordable Care Act (ACA), with a particular focus on how the surveys could be used to examine differences within and among states. It provides:

Introduction

As the United States implements the Patient Protection and Affordable Care Act (ACA), 2014 marks an important year when policymakers and researchers will have their first opportunities to measure the effects of the law's core provisions designed to expand health coverage and access. Because many aspects of the law depend on decisions and actions at the state level, differences among the states provide fertile opportunity for better understanding the impacts of the ACA under a variety of circumstances. For example, approximately half of the 50 states have expanded their Medicaid programs while the other half have not. Additionally, the effects of the law may vary based on states' individual characteristics, such as their existing health insurance coverage, health care financing, and health care delivery systems, as well as their unique economic environments and the demographic and socioeconomic characteristics of their populations.

In anticipation of the need to monitor the impact of the ACA, several federal surveys that historically have asked questions about health insurance coverage and access to health care services are being or have been revised to address the impact of health reform. This brief discusses federal surveys with questions on health coverage and access, focusing especially on some changes to federal surveys that could be used to monitor the effects of health reform.

SHADAC Resources (2)



BRIEF 23 • MAY 2014

An Introduction to Redesigned Health Insurance Coverage Questions in the 2014 Current Population Survey's Annual Social and Economic Supplement

Authors

Josanna Turner
 Michel Roudsrouk
 State Health Access Data
 Assistance Center (SHADAC)

Summary

This brief discusses the addition of new and modified health insurance coverage questions to the 2014 CPS. The question series was completely redesigned to:

- Improve the measure of past year coverage
- Add a point in time measure
- Collect additional information related to health reform (exchange participation and employer-offers of coverage)
- Provide coverage by month

Introduction

The Current Population Survey (CPS), conducted by the U.S. Census Bureau for the Bureau of Labor Statistics, is designed to provide monthly data on labor force participation and unemployment for the civilian non-institutionalized population. Data on health insurance coverage, income, and non-cash employment benefits are collected once each year through the Annual Social and Economic Supplement (ASEC), which is administered February through April. The survey provides annual estimates for the nation and states. The reference period for both the income and health insurance questions is the calendar year prior to the survey.

The question series has undergone several changes over the years (Davero et al. 2003; SHADAC 2009; Zingales and Diorez 2011; Boudreau and Turner 2011). This brief discusses the most recent change: the addition of new and modified health insurance coverage questions to the 2014 CPS. The health insurance coverage questions were completely redesigned to 1) improve the measure of past year coverage, 2) add a point in time measure, 3) collect additional information related to health reform (exchange participation and employer-offers of coverage), and 4) provide coverage by month. This brief provides an overview of the new and modified content.

New and Modified Health Insurance Coverage Questions

For decades, the Census Bureau and external researchers have recognized several flaws in the CPS health insurance questions which cause it to over-estimate the number of uninsured



New Questions

The Census Bureau is currently evaluating the estimates from the new health insurance coverage questions and new content is projected to be released in Summer 2015.

Public Use Files

- September 16, 2014
CPS 2013 public use file from partial sample
- January 2015
CPS 2013 public use file from full sample
- Summer 2015
CPS 2013 public use file with new content

SHADAC Resources (3)

National Estimates

September 16, 2014

- NHIS early-release estimates for January to March 2014
- CPS point-in-time estimates for February to April 2014 (not in public use file)

December 2014

- NHIS early-release estimates for January to June 2014

March 2015

- NHIS early-release estimates for January to September 2014

June 2015

- NHIS early-release estimates for 2014

September 2015

- CPS estimates for 2014
- ACS estimates for 2014

Public Use Files**

June 2015

NHIS 2014
(no state identifiers)

September 2015

CPS 2014

October 2015

ACS 2014



September 16, 2014
NHIS Jan-Mar 2014
CPS Feb-Apr 2014



December 2014
NHIS Jan-Jun 2014



March 2015
NHIS Jan-Sep 2014



June 2015
NHIS 2014



September 2015
CPS 2014
ACS 2014

State Estimates

December 2014

- NHIS early-release estimates for January to June 2014 for 12 states*

March 2015

- NHIS early-release estimates for January to September 2014 for 12 states*

June 2015

- NHIS early-release estimates for 2014 for 42 states and DC*

September 2015

- CPS estimates for 2014
- ACS estimates for 2014

Public Use Files**

September 2015

CPS 2014

October 2015

ACS 2014



December 2014
NHIS Jan-Jun 2014
Selected States



March 2015
NHIS Jan-Sep 2014
Selected States



June 2015
NHIS 2014
Selected States



September 2015
CPS 2014
ACS 2014

SHADAC Resources (4)

- ACS tables from American FactFinder showing change in health insurance coverage for states and counties
- <http://shadac.org/publications/2013-acs-comparison-tables>



Uninsurance Rates for Minnesota in 2012 and 2013

Subject	2012		2013	
	Population	% Uninsured	Population	% Uninsured
Total civilian noninstitutionalized population				
United States	308,696,490	14.8	311,158,104	14.5*
Minnesota	5,318,783	8.0	5,362,661	8.2
Age				
Under 18 years	1,275,509	5.4	1,290,298	5.6
18 to 64 years	3,344,084	10.6	3,357,171	10.9
18 to 24 years	490,345	14.5	499,549	15.7*
65 years and older	700,190	0.8	725,274	0.5
Race/Ethnicity				
White alone	4,552,775	6.9	4,550,754	6.9
Black or African American alone	279,798	14.0	297,646	15.1
American Indian and Alaska Native alone	53,223	21.2	57,322	22.7
Asian alone	226,570	9.7	233,284	10.6
Native Hawaiian and Other Pacific Islander alone	N	N	N	N
Some other race alone	71,750	33.7	87,472	37.4
Two or more races	134,473	8.6	144,509	9.0
White alone, not Hispanic or Latino	4,382,481	8.2	4,393,688	8.1
Hispanic or Latino (of any race)	260,511	27.5	264,730	29.1
Citizenship Status				
Native born	4,923,547	8.8	4,881,956	7.9
Foreign born	390,236	21.5	400,725	23.6
Naturalized	181,402	9.5	200,220	11.9*
Not a citizen	204,834	32.0	194,505	35.7



Uninsurance Rates for Minnesota Counties in 2012 and 2013, by Age

	All People				Children 0-17			
	2012		2013		2012		2013	
	Population	% Uninsured	Population	% Uninsured	Population	% Uninsured	Population	% Uninsured
United States	308,696,490	14.8	311,158,104	14.9*	73,877,804	7.2	73,448,062	7.1
Minnesota	5,318,783	8.0	5,362,661	8.2	1,275,509	5.4	1,290,298	5.6
Anoka	334,205	6.9	337,266	7.4	84,120	3.4	83,542	4.8
Blue Earth	84,870	7.6	85,003	6.9	12,538	4.6	12,894	2.5
Carver	93,458	4.1	95,301	5.2	27,275	2.0	27,317	2.0
Dakota	403,354	7.1	406,864	7.1	102,956	3.1	102,873	4.2
Hennepin	1,175,049	8.4	1,188,991	9.2*	266,066	4.7	267,810	5.8
Kimberly	144,922	6.7	147,100	7.2	36,670	4.0	37,199	4.7
Ramsey	515,834	10.0	522,674	10.4	121,949	5.7	122,880	5.8
Rice	N	N	62,485	8.0	N	N	55,323	13.4
St. Louis	196,584	6.9	197,220	8.2	38,422	5.0	38,275	6.0
Scott	133,823	5.5	135,943	7.3	30,548	2.5	30,818	3.2
Shelburne	87,958	6.1	88,060	2.9*	25,457	2.9	25,347	2.6
Stearns	150,526	6.0	150,941	6.9	34,300	3.8	34,459	4.0
Washington	240,888	6.3	243,823	5.6	62,734	7.3	62,731	6.0
Wright	128,271	6.7	127,742	6.2	37,110	6.8	37,349	4.0



CPS SHADAC-Enhanced

- Not producing in September, 2014
- Evaluating in early 2015 when full sample file is available

MN Population Center Releases (IPUMS)

- CPS data now available
- ACS data files will be released about 1-2 weeks after available from the Census Bureau
- SHADAC Health Insurance Unit (HIU) and Federal Poverty Guidelines (FPG) variables for CPS and ACS will be available soon

<http://www.ipums.org>

Contact Information

Direct inquiries to
Joanna Turner, turn0053@umn.edu
or shadac@umn.edu



www.shadac.org

 [@shadac](https://twitter.com/shadac)