

Use of Survey Data for Tracking the Impact of the ACA in States

Kathleen Thiede Call

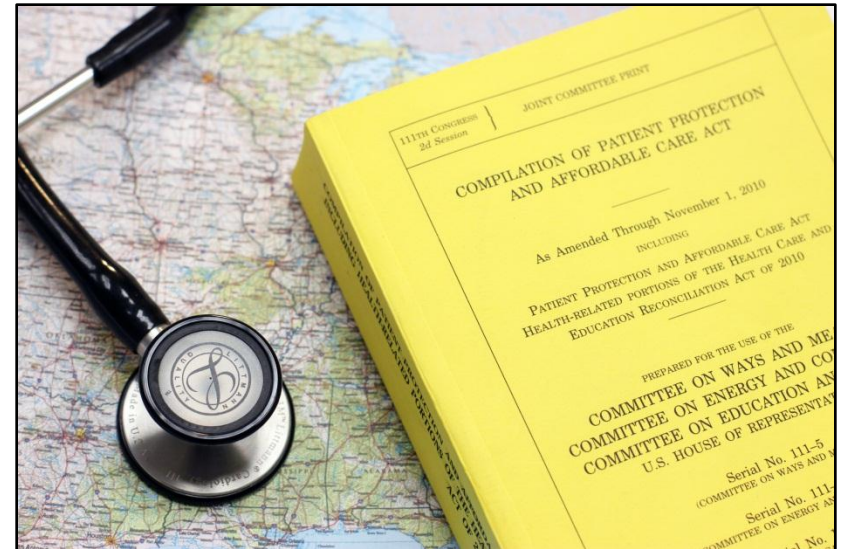
National Network of State and Local Health Surveys

APHA San Francisco

October 29, 2012

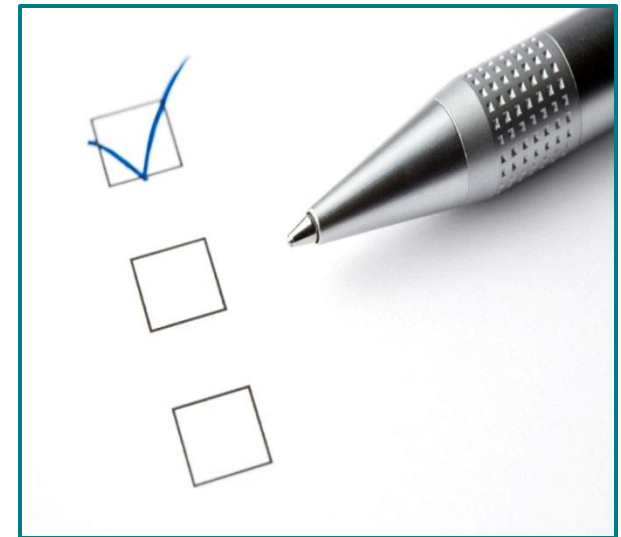
Overview

- Monitoring health reform:
 1. Health insurance **coverage**
 2. **Affordability** and comprehensiveness of coverage
 3. **Access** to health care services



Considerations for Selecting Measures

- Measures that reflect major goals and provisions of the law
- Outcomes rather than implementation process
- Relevant/meaningful to policymakers



Considerations for Recommending Data Sources

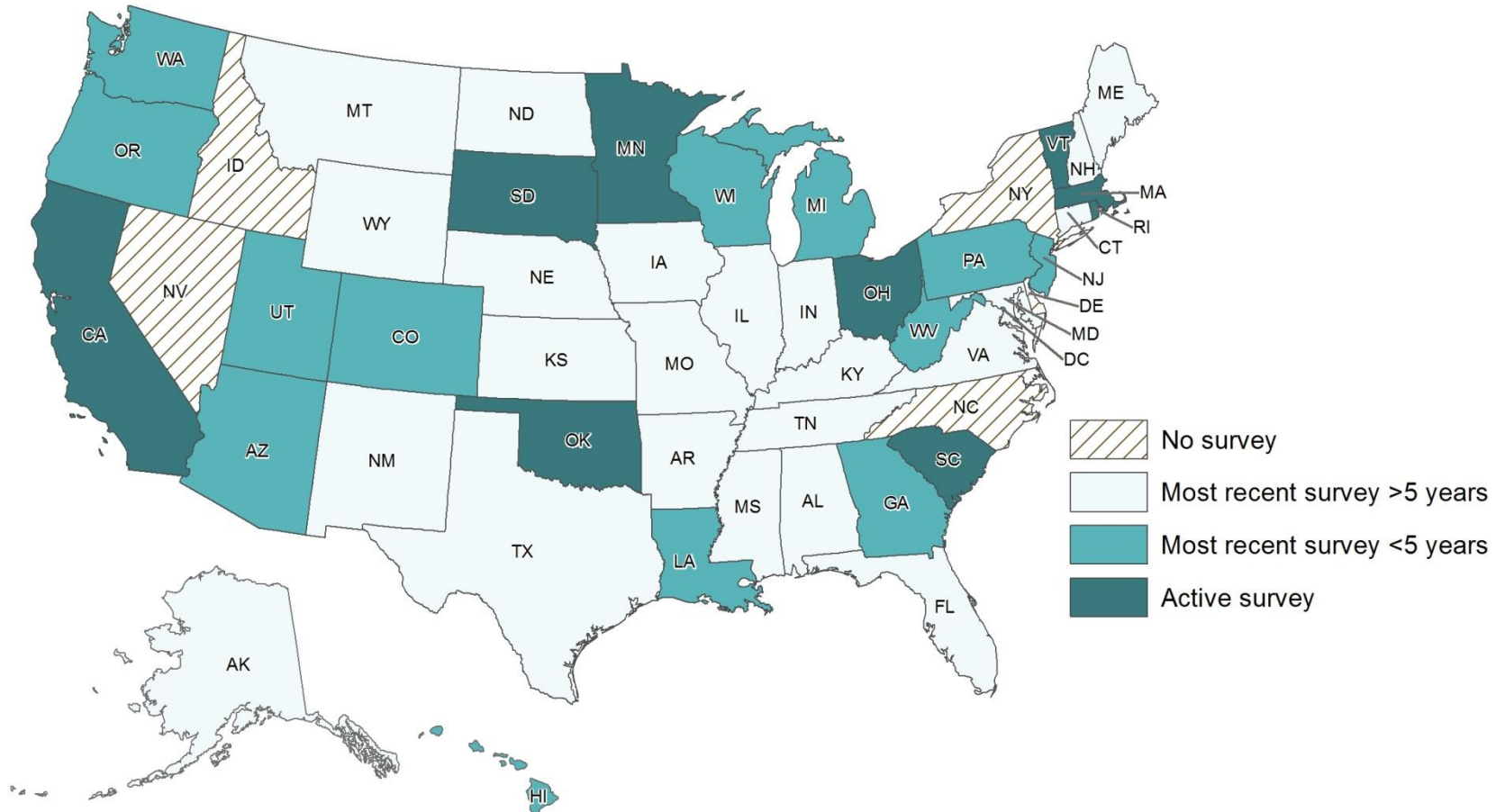
- Comparability over time
- Ability to do in-depth analysis (e.g., by geography, age, income, race/ethnicity)
- Population coverage – complete population of interest
- Availability of benchmarks/national comparisons
- Timeliness of estimates
- Accessibility of data
- Flexibility to adapt to changing needs



Measures come from Varied Data Sources

- Population surveys
 - Employer surveys
 - Health care provider data
 - Health plan data
 - State public program data
-
- Today's focus: review framework discussing measures available through **population surveys**

State-specific Household Survey Activity



<http://www.shadac.org/content/state-survey-research-activity>

Priority Measures: Coverage

Distribution of Insurance Coverage

Uninsured

Point in time

Uninsured for a year or longer

Uninsured at some point in past year

Reasons for uninsurance

Exempt from mandate

Paying penalty

Public Coverage

Enrollment trend

Participation rate

Churning

Health Insurance Exchange

Nongroup coverage: exchange and as % of market

Employer coverage: exchange and as % of market

Employer Coverage

Employers offering

Employees in firms that offer

% Eligible

% Enrolled

Families with ESI offer

All family members enrolled

Employers paying penalty

Priority Measures: Coverage

Distribution of Insurance Coverage

Uninsured

Point in time

Uninsured for a year or longer

Uninsured at some point in past year

Reasons for uninsurance

Exempt from mandate

Paying penalty

Public Coverage

Enrollment trend

Participation rate

Churning

Health Insurance Exchange

Nongroup coverage: exchange and as % of market

Employer coverage: exchange and as % of market

Employer Coverage

Employers offering

Employees in firms that offer

% Eligible

% Enrolled

Families with ESI offer

All family members enrolled

Employers paying penalty

Priority Measures: Coverage

Distribution of Insurance Coverage

Uninsured

Point in time

Uninsured for a year or longer

Uninsured at some point in past year

Reasons for uninsurance

Exempt from mandate

Paying penalty

Public Coverage

Enrollment trend

Participation rate

Churning

Health Insurance Exchange

Nongroup coverage: exchange and as % of market

Employer coverage: exchange and as % of market

Employer Coverage

Employers offering

Employees in firms that offer

% Eligible

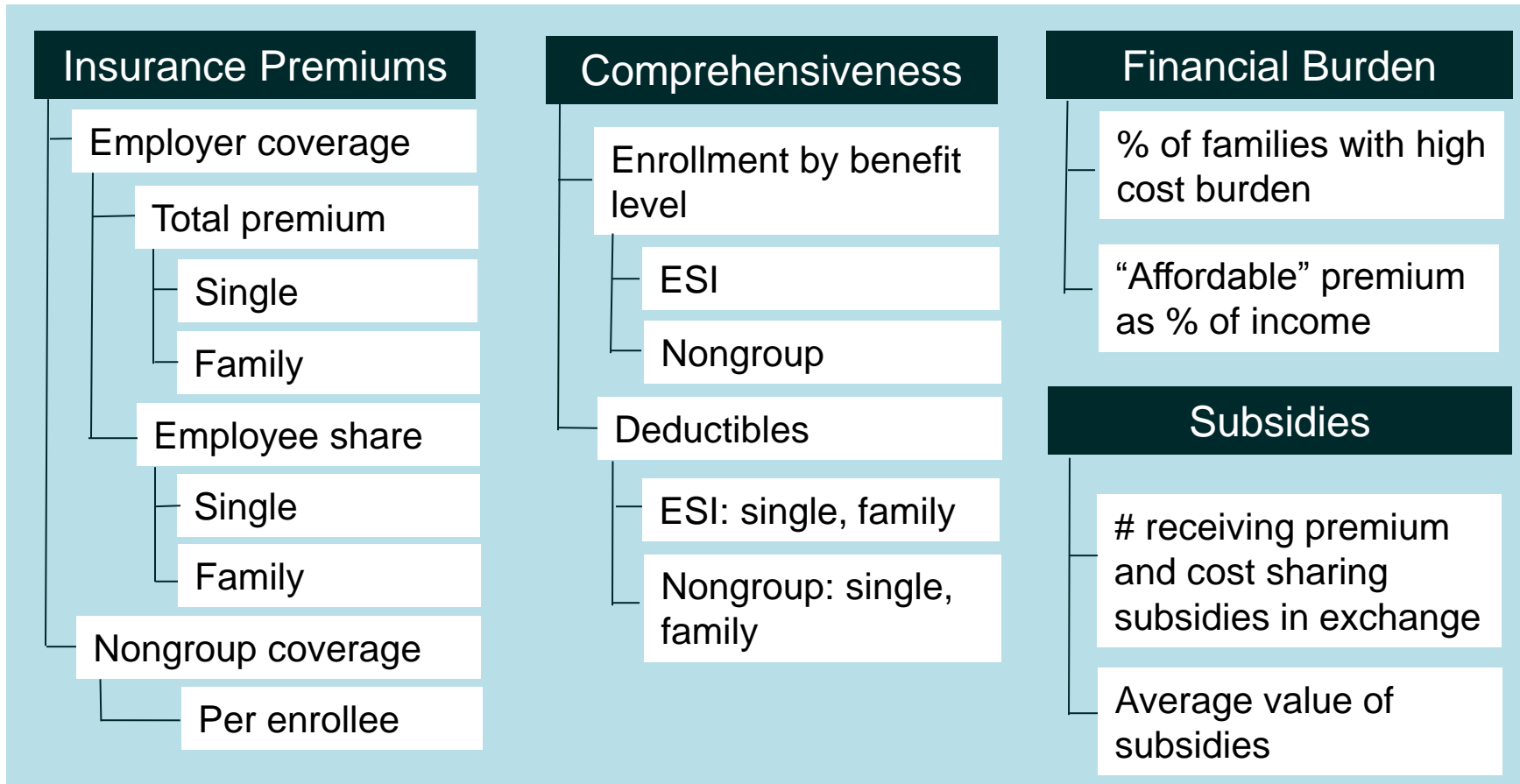
% Enrolled

Families with ESI offer

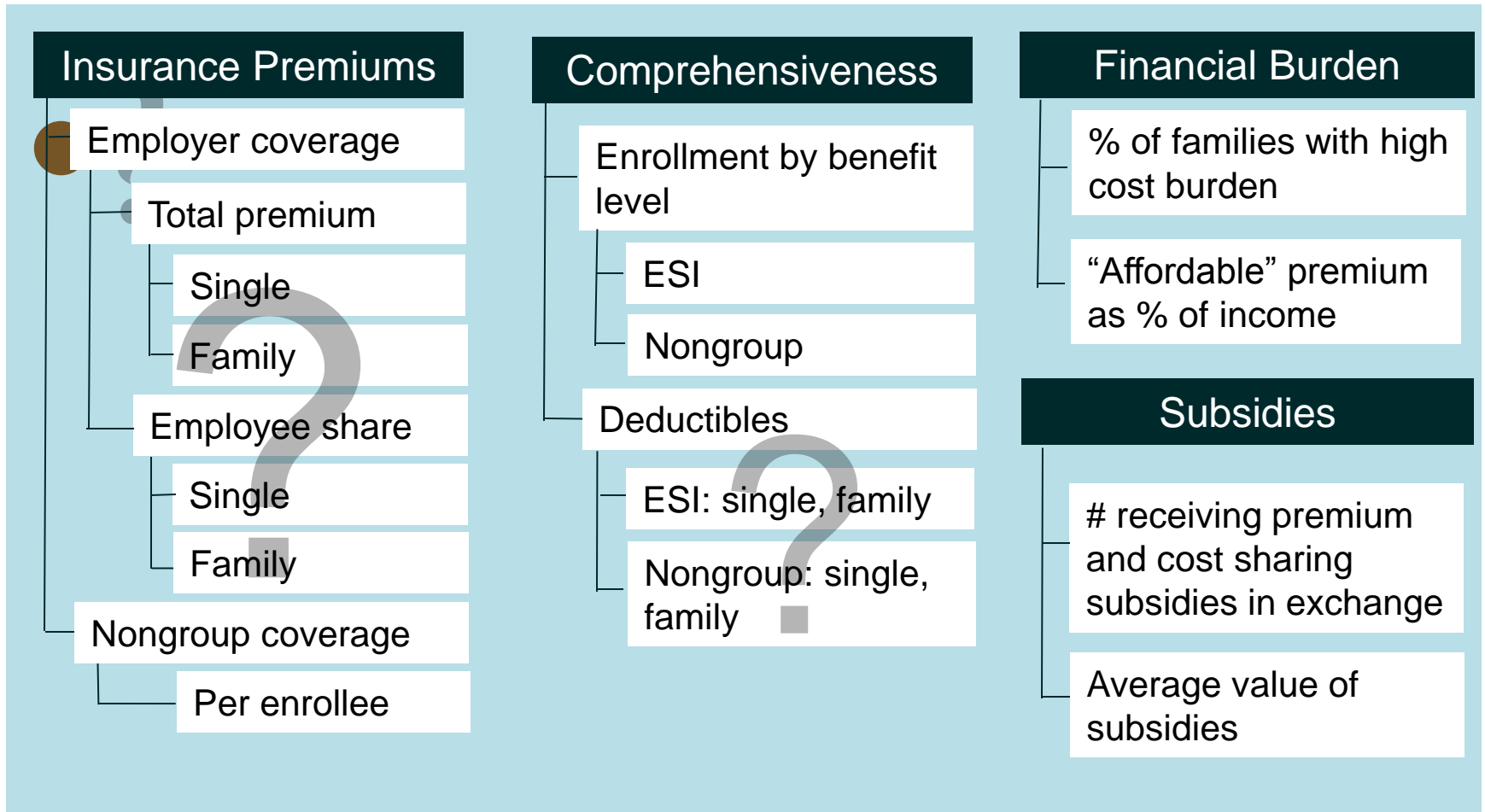
All family members enrolled

Employers paying penalty

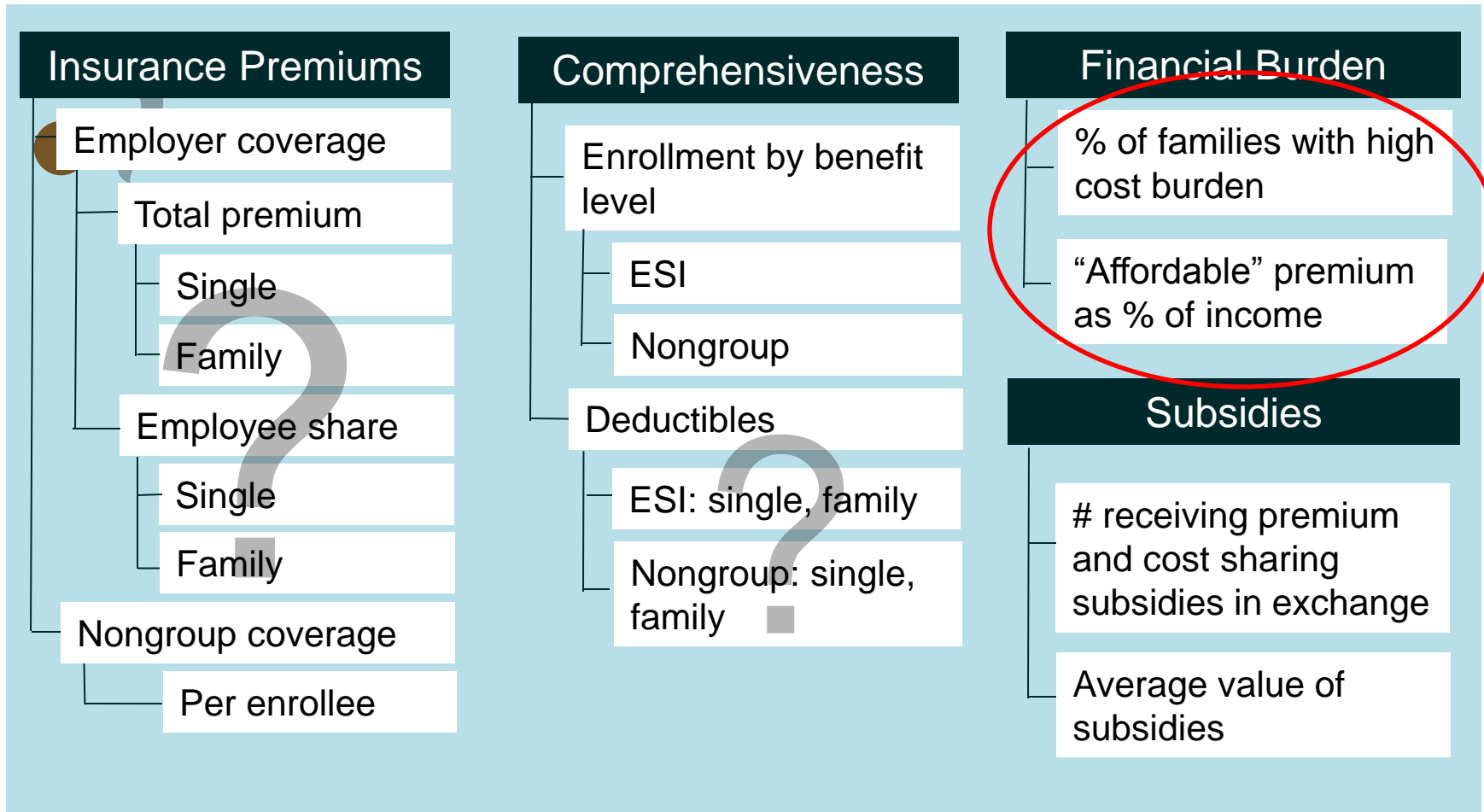
Priority Measures: Affordability & Comprehensiveness of Coverage



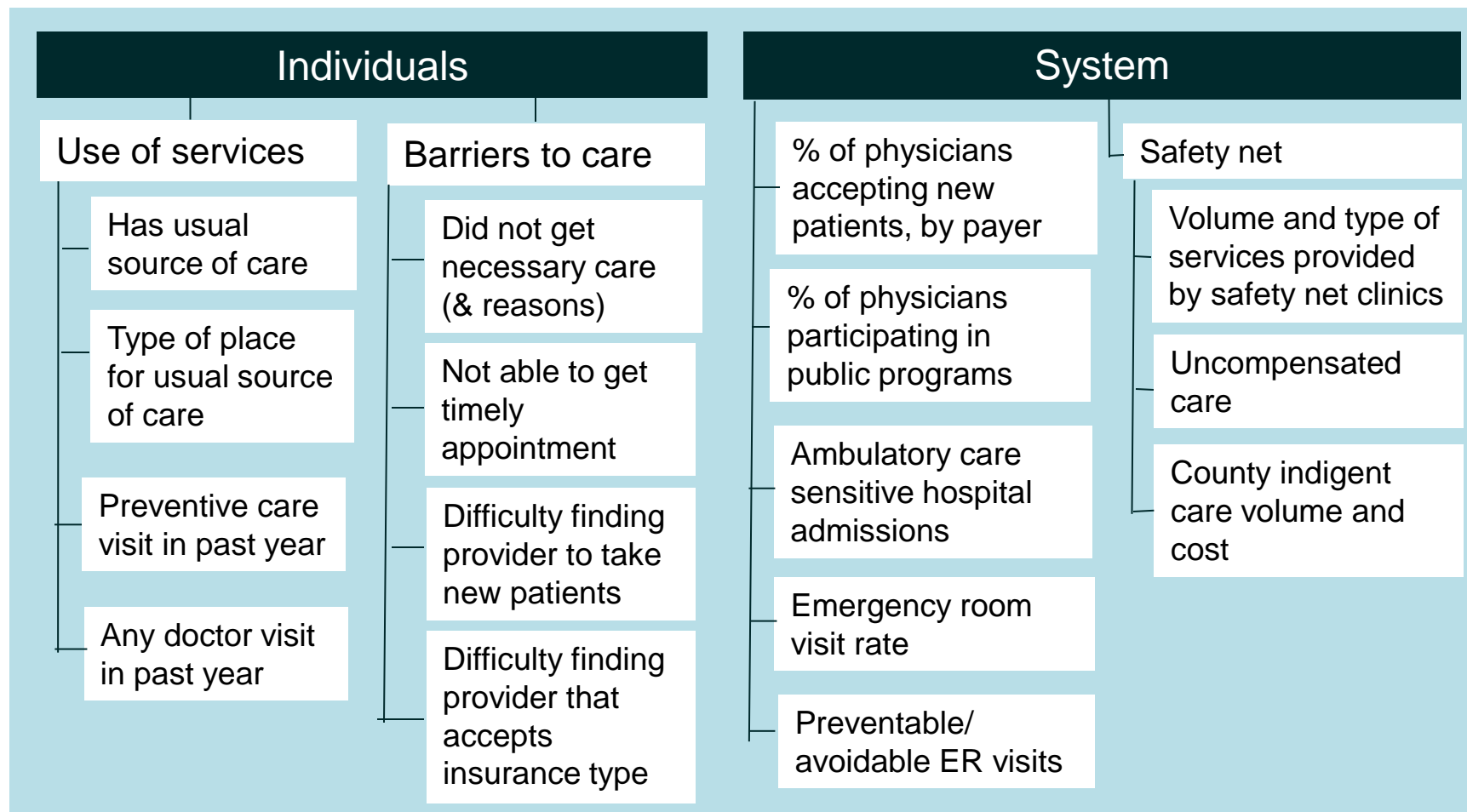
Priority Measures: Affordability & Comprehensiveness of Coverage



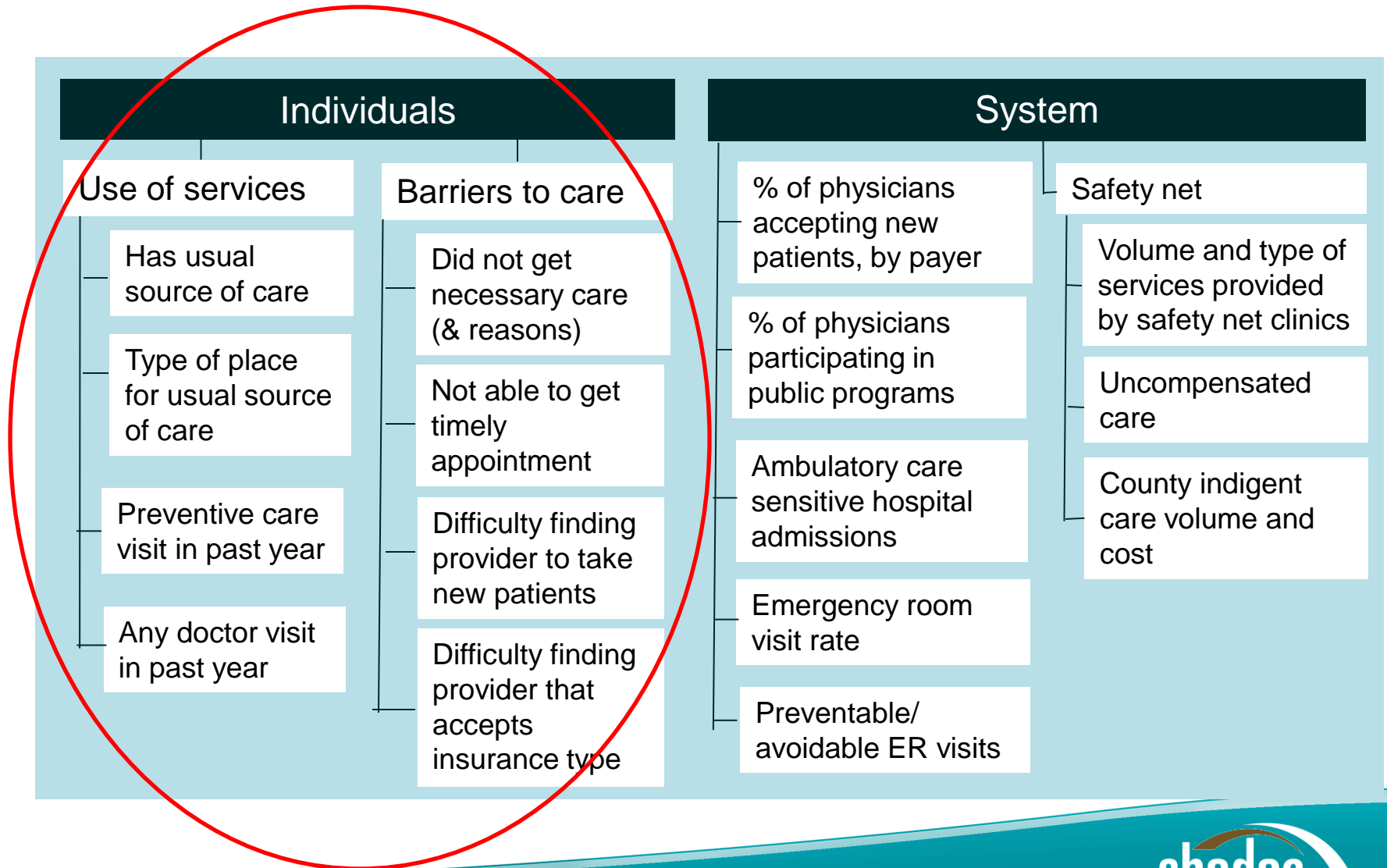
Priority Measures: Affordability & Comprehensiveness of Coverage



Priority Measures: Access to Care



Priority Measures: Access to Care



Concluding comments

- State-specific surveys provide data in all three priority areas: **coverage, affordability, access**
- State-specific survey advantage
 - Wide range of policy relevant questions
 - Flexibility to alter survey content
 - Quick turnaround availability
- State-specific survey have and will continue to play a role in monitoring health reform

Complete copy of the Framework report is available at:

<http://www.shadac.org/publications/framework-tracking-impacts-affordable-care-act-in-california>

Kathleen Thiede Call

callx001@umn.edu

Sign up to receive our newsletter and updates at
www.shadac.org

 @shadac



UNIVERSITY OF MINNESOTA

School of Public Health